



PRICE LIST

- 2015 -



X-TREME - LINEAR SOURCE ARRAY

MODEL		Euro (Tax excl.)
XTLSA	Linear Source Array Module - Power handling RMS: 760 W - Power handling Music: 1500 W Impedance (bi-amp): 8 (LF), 8 (MF+HF) Ohm - Tri-amplifiable speaker - Max SPL (@ 1m): 137 dB Transducers: LF 1x12" Neodymium, MF 2x6" Neodymium, HF 2x1" Titanium - Narrow Beam Double Horn	4532.00
XTLSAS	Arrayable LSA Double Subwoofer - Power handling RMS: 2400 W - Power handling Music: 4800 W Impedance: 4 Ohm - Special version available on request: 4+4 Ohm impedance Max SPL (@ 1m): 142 dB - Transducers: 2x18" Neodymium	3507.00

X-TREME - ACTIVE LINEAR SOURCE ARRAY WITH DSP

MODEL		Euro (Tax excl.)
XTLSA/A	Active Linear Source Array Module - Class D Digital Amplifier - Amplifier Power RMS: 800+800 W DSP on board: 24 bit, 96 kHz (2 presets) - Network for XT-NET - Max SPL (@ 1m): 137 dB Transducers: LF 1x12" Neodymium, MF 2x6" Neodymium, HF 2x1" Titanium - Narrow Beam Double Horn	5998.00
XTLSAS/A	Active Arrayable LSA Double Subwoofer - Class D Digital Amplifier - Amplifier Power RMS: 2500 W DSP on board: 24 bit, 96 kHz (2 presets) - Network for XT-NET - Max SPL (@ 1m): 142 dB Transducers: 2x18" Neodymium	5174.00

X-TREME - LINEAR SOURCE ARRAY ACCESSORIES

MODEL		Euro (Tax excl.)
STD-LSA	Flying bar for Linear Source Array	1495.00
XT-PIN	Stainless steel spring pin with ball locking	27.00
XT-PSB32/8	Patch board 32A - 2 XLR IN, 2 XLR OUT - 4 Speakon OUT NL8MPPR - 3 rack units	943.00
XT-NETINT	Network Interface for XT-NET connection (PC adapter: from USB or RS232 to standard RJ45)	389.00
XT-NETPS	Power unit to supply up to 2 XT-NETINT (if a RS232 is used)	232.00
XT-NETRACK	19" Rack mounted patch board with 3 sockets for XT-NET pc adapters - 1 rack unit	166.00
XTLSA-SK	Wheelboard for XTLSA and XTLSA/A loudspeaker system	234.00
XTLSAS-SK	Wheelboard for XTLSAS and XTLSAS/A double subwoofer	234.00



XTLSA



XTLSAS

2





X-TREME - MISI™

MODEL		Euro (Tax excl.)
XTMISI	Middle-Sized Line Array Module - Power handling RMS: 900 W - Power handling Music: 1800 W Impedance (bi-amp): 8 (LF), 8 (MF+HF) Ohm - Tri-amplifiable speaker - Max SPL (@ 1m): 136 dB Transducers: LF 1x10" Neodymium, MF 1x10" Neodymium, HF 2x1" Titanium - EIWD™	2809.00
XTMISIS	Arrayable MISI Double Subwoofer - Power handling RMS: 2400 W - Power handling Music: 4800 W Impedance: 4 Ohm - Special version available on request: 4+4 Ohm impedance Max SPL (@ 1m): 140 dB - Transducers: 2x18" Neodymium	3329.00

X-TREME - ACTIVE MISI™ WITH DSP

MODEL		Euro (Tax excl.)
XTMISI/A	Active Middle-Sized Line Array Module - Class D Digital Amplifier - Amplifier Power RMS: 800+800 W DSP on board: 24 bit, 96 kHz (2 presets) - Network for XT-NET - Max SPL (@ 1m): 136 dB Transducers: LF 1x10" Neodymium, MF 1x10" Neodymium, HF 2x1" Titanium - EIWD™	4344.00
XTMISIS/A	Active Arrayable MISI Double Subwoofer - Class D Digital Amplifier - Amplifier Power RMS: 2500 W DSP on board: 24 bit, 96 kHz (2 presets) - Network for XT-NET - Max SPL (@ 1m): 140 dB Transducers: 2x18" Neodymium	5073.00

X-TREME - MISI™ ACCESSORIES

MODEL		Euro (Tax excl.)
STD-MISI	Flying bar for Middle-Sized Line Array	807.00
XT-PIN	Stainless steel spring pin with ball locking	27.00
XT-PSB32/8	Patch board 32A - 2 XLR IN, 2 XLR OUT - 4 Speakon OUT NL8MPPR - 3 rack units	943.00
XT-NETINT	Network Interface for XT-NET connection (PC adapter: from USB or RS232 to standard RJ45)	389.00
XT-NETPS	Power unit to supply up to 2 XT-NETINT (if a RS232 is used)	232.00
XT-NETRACK	19" Rack mounted patch board with 3 sockets for XT-NET pc adapters - 1 rack unit	166.00
XTMISIS-SK	Wheelboard for XTMISIS and XTMISIS/A double subwoofer	199.00



XTMISI



XTMISIS



X-TREME - MINI LINE ARRAY

MODEL		Euro (Tax excl.)
XTMLA	Mini Line Array Module - Power handling RMS: 500 W - Power handling Music: 1000 W Impedance (bi-amp): 16 (LF), 16 (MF+HF) Ohm - Tri-amplifiable speaker - Max SPL (@ 1m): 133 dB Transducers: LF 1x8" Neodymium, MF 1x6" Neodymium, HF 2x1" Titanium - EIWD™	2042.00
XTMLAS	Arrayable MLA Double Subwoofer - Power handling RMS: 2000 W - Power handling Music: 4000 W Impedance: 4 Ohm - Max SPL (@ 1m): 138 dB Transducers: 2x15" Neodymium	2715.00

X-TREME - ACTIVE MINI LINE ARRAY WITH DSP

MODEL		Euro (Tax excl.)
XTMLA/A	Active Mini Line Array Module - Class D Digital Amplifier - Amplifier Power RMS: 800+800 W DSP on board: 24 bit, 96 kHz (2 presets) - Network for XT-NET - Max SPL (@ 1m): 133 dB Transducers: LF 1x8" Neodymium, MF 1x6" Neodymium, HF 2x1" Titanium - EIWD™	3496.00
XTMLAS/A	Active Arrayable MLA Double Subwoofer - Class D Digital Amplifier - Amplifier Power RMS: 2500 W DSP on board: 24 bit, 96 kHz (2 presets) - Network for XT-NET - Max SPL (@ 1m): 138 dB Transducers: 2x15" Neodymium	4430.00

X-TREME - MINI LINE ARRAY ACCESSORIES

MODEL		Euro (Tax excl.)
STD-MLA	Flying bar for Mini Line Array	722.00
XT-PIN	Stainless steel spring pin with ball locking	27.00
XT-PSB32/8	Patch board 32A - 2 XLR IN, 2 XLR OUT - 4 Speakon OUT NL8MPR - 3 rack units	943.00
XT-NETINT	Network Interface for XT-NET connection (PC adapter: from USB or RS232 to standard RJ45)	389.00
XT-NETPS	Power unit to supply up to 2 XT-NETINT (if a RS232 is used)	232.00
XT-NETRACK	19" Rack mounted patch board with 3 sockets for XT-NET pc adapters - 1 rack unit	166.00
XTMLA-PORT	Stand holder for Mini Line Array "portable" configuration	452.00
XTMLAS-SK	Wheelboard for XTMLAS and XTMLAS/A double subwoofer	199.00



XTMLA



XTMLAS



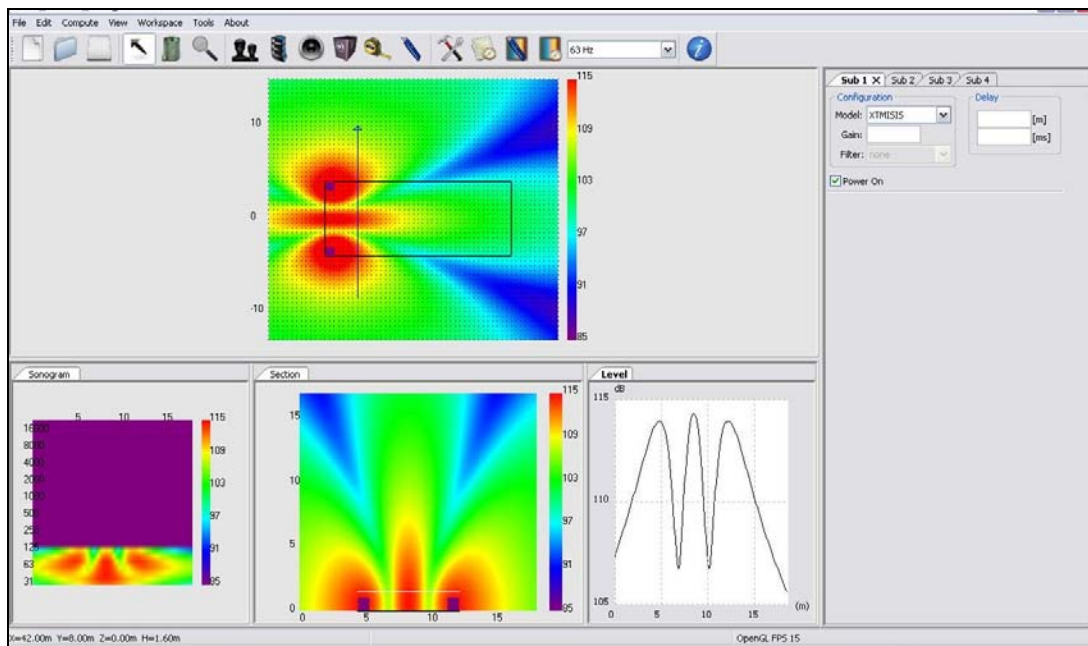
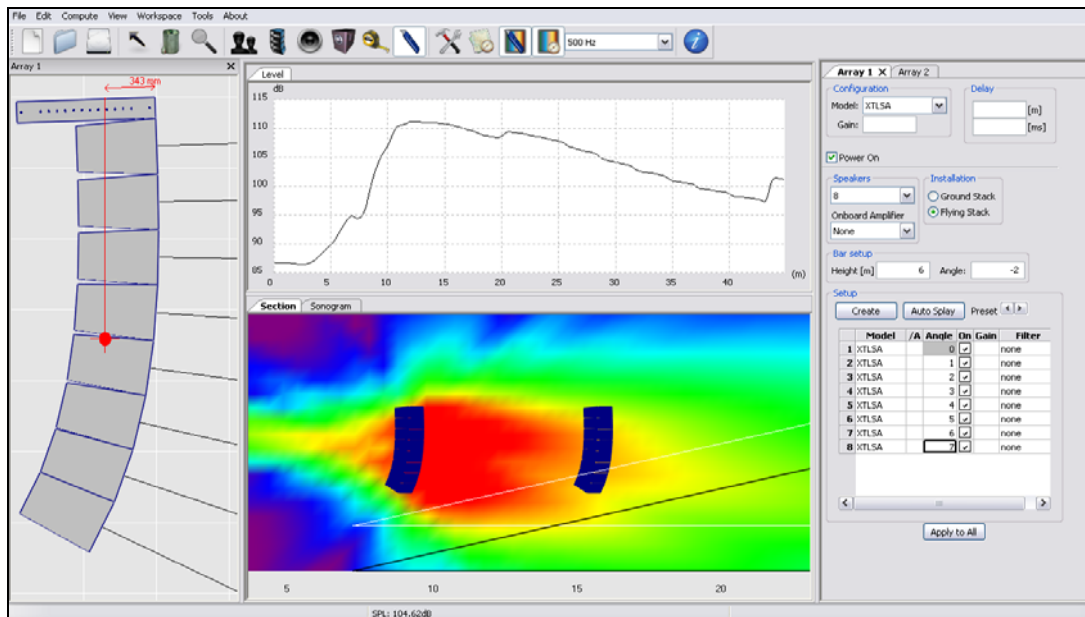
X-TREME INSTALLER™



MODEL

Euro (Tax excl.)

XTI	Proprietary software designed and developed to create a 3D space virtual installation of Vertical Line Arrays and the other X-Treme loudspeaker systems	230.00
------------	---	---------------





X-TREME - MONITOR LINE

MODEL		Euro (Tax excl.)
XTMON12	Professional Stage Monitor - Power handling RMS: 450 W - Power handling Music: 900 W Impedance: 8 Ohm - Max SPL (@ 1m): 132 dB Transducers: LF 1x12" Neodymium, HF 1x3" Titanium, coaxial	1331.00
XTMON15	Professional Stage Monitor - Power handling RMS: 500 W - Power handling Music: 1000 W Impedance: 8 Ohm - Max SPL (@ 1m): 133 dB Transducers: LF 1x15" Neodymium, HF 1x3" Titanium, coaxial	1388.00

X-TREME - ACTIVE MONITOR LINE WITH DSP

MODEL		Euro (Tax excl.)
XTMON12/A	Active Professional Stage Monitor - Class D Digital Amplifier - Amplifier Power RMS: 800+800 W DSP on board: 24 bit, 96 kHz (2 presets) - Network for XT-NET - Max SPL (@ 1m): 132 dB Transducers: LF 1x12" Neodymium, HF 1x3" Titanium, coaxial	2771.00
XTMON15/A	Active Professional Stage Monitor - Class D Digital Amplifier - Amplifier Power RMS: 800+800 W DSP on board: 24 bit, 96 kHz (2 presets) - Network for XT-NET - Max SPL (@ 1m): 133 dB Transducers: LF 1x15" Neodymium, HF 1x3" Titanium, coaxial	2838.00

X-TREME - MONITOR LINE ACCESSORIES

MODEL		Euro (Tax excl.)
XT-NETINT	Network Interface for XT-NET connection (PC adapter: from USB or RS232 to standard RJ45)	389.00
XT-NETPS	Power unit to supply up to 2 XT-NETINT (if a RS232 is used)	232.00
XT-NETRACK	19" Rack mounted patch board with 3 sockets for XT-NET pc adapters - 1 rack unit	166.00



XTMON12



XTMON15



XTMON12/A



XTMON15/A



X-TREME - CLASSIC LINE

MODEL		Euro (Tax excl.)
XTH	Two-way (MF-HF) Professional Speaker - Power handling RMS: 550 W - Power handling Music: 1100 W Impedance: 8 Ohm - Max SPL (@ 1m): 137 dB Transducers: MF 1x12" Neodymium, HF 1x2" Titanium	2260.00
XTL	Professional Woofer - Power handling RMS: 850 W - Power handling Music: 1700 W Impedance: 8 Ohm - Max SPL (@ 1m): 137 dB Transducers: LF 1x18"	1648.00
XTS	Professional Subwoofer - Power handling RMS: 1200 W - Power handling Music: 2400 W Impedance: 8 Ohm - Max SPL (@ 1m): 137 dB Transducers: 1x18" Neodymium	1870.00

X-TREME - CLASSIC LINE LONG THROW MODULE

MODEL		Euro (Tax excl.)
XTLT	Professional Long Throw Module - Power handling RMS: 460 W - Power handling Music: 900 W Impedance: 4 Ohm - Max SPL (@ 1m): 140 dB Transducers: MF 3x6" Neodymium, HF 2x1" Titanium - Narrow Beam Double Horn	3691.00

X-TREME - CLASSIC LINE ACCESSORIES

MODEL		Euro (Tax excl.)
STD-XT2	Flying bar to suspend 2 Classic Line loudspeaker systems	499.00
STD-XT3	Flying bar to suspend 3 Classic Line loudspeaker systems	699.00
XT-KITSTD	Flying kit to hook up 1 Classic Line speaker to the STD-XT2 or STD-XT3 bars	143.00
XT-KITCLA	Flying kit to hook up 1 Classic Line speaker to another one	179.00
XT-G	"Bri pin" ring hook D. 11 mm	12.00
XT-TIR	Tie rod D. 8/A L. 350-500-650 mm	31.00
XT-PIN	Stainless steel spring pin with ball locking	27.00
XT-SN	Joint for hanging 1 Classic Line speaker to another one	33.00
XT-TF	Strip-type belt with ratchet (D. mm 25, L. m 4.5)	56.00
XT-PSB32/4	Patch board 32A - 2 XLR IN, 2 XLR OUT - 4 Speakon OUT NL4MPR - 3 rack units	880.00
CLASSIC-COV	Protection enclosure for Classic Line loudspeaker systems	140.00
CLASSIC-SK	Wheelboard for all the Classic Line loudspeaker systems	169.00



XTH



X-TREME - X-ONE

MODEL		Euro (Tax excl.)
XTO	Single Point Source Speaker - Power handling RMS: 800 W - Power handling Music: 1600 W Impedance (full range): 8 Ohm - Max SPL (@ 1m): 134 dB Transducers: LF 1x15" Neodymium, HF 1x2.83" Titanium, coaxial Coverage Angle (-6 dB): 60° conical - Horizontal, Vertical and Crosswise Constant Directivity Special design for being also used as stage monitor with two different vertical angles for near or far listeners	1570.00

X-TREME - X-ONE SUBWOOFERS

MODEL		Euro (Tax excl.)
XTOS	Professional Subwoofer - Power handling RMS: 1000 W - Power handling Music: 2000 W Impedance: 8 Ohm - Max SPL (@ 1m): 133 dB Transducers: 1x15" Neodymium Properly realized for a perfect coupling with an XTO loudspeaker system	1360.00
XTODS	Professional Double Subwoofer - Power handling RMS: 2000 W - Power handling Music: 4000 W Impedance: 4 Ohm - Max SPL (@ 1m): 139 dB Transducers: 2x15" Neodymium Properly realized for a perfect coupling with 2 XTO loudspeaker systems	2822.00

X-TREME - X-ONE ACCESSORIES

MODEL		Euro (Tax excl.)
STD-ONE	Horizontal flying bar to suspend a XTO or XTOS speaker to create horizontal clusters (2 XT-PIN included)	139.00
STD-ONEBAR	Vertical flying bar to suspend a XTO or XTOS speaker to create vertical clusters (2 XT-PIN included)	139.00
XT-GN	Hook for the attachment to a rigging system	16.00
XT-PIN	Stainless steel spring pin with ball locking	27.00
XT-KITONEV	Flying kit to secure a XTO or XTOS speaker to another one to create vertical clusters (2 STD-ONEBAR + 2 XT-G + 1 XT-SC)	357.00
XT-G	"Bri pin" ring hook D. 11 mm	12.00
XT-SC	Screw Catch for vertical connection	11.00
XT-KITONEH	Flying kit to secure a XTO or XTOS speaker to another one to create horizontal clusters (4 XT-PIN + 2 XT-ONEAC)	229.00
XT-ONEAC	Adapter for the connection of a XTO or XTOS speaker to another one in horizontal clusters	114.00
XT-TF	Strip-type belt with ratchet (D. mm 25, L. m 4.5)	56.00
XT-ST100	Adjustable-height stand holder for subwoofer-upper module connection	49.00
XT-ST125	Adjustable-height three-legged stand for a XTO speaker	89.00
XT-SNO	Joint for subwoofer-upper module connection suitable for vertical inclination adjustment	86.00
XTODS-SK	Wheelboard for XTODS subwoofer	189.00



XTO



XTOS



XTODS



XTO+XTOS + XTODS



8





X-TREME - DEFLECTOR LINE

MODEL		Euro (Tax excl.)
XTD88	Professional Loudspeaker System - Power handling RMS: 550 W - Power handling Music: 1000 W Impedance: 8 Ohm - Max SPL (@ 1m): 129 dB - Transducers: LF 2x8" Neodymium, HF 1x1" Mylar - AWSH®	935.00
XTD12	Professional Loudspeaker System - Power handling RMS: 850 W - Power handling Music: 1700 W Impedance: 8 Ohm - Max SPL (@ 1m): 133 dB - Trans.: LF 1x12" Neodymium, HF 1x1.4" Titanium - AWSH® Cabinet equipped with a proprietary curved deflector designed to control the inner air flow	1457.00
XTD15	Professional Loudspeaker System - Power handling RMS: 750 W - Power handling Music: 1500 W Impedance: 8 Ohm - Max SPL (@ 1m): 134 dB - Trans.: LF 1x15" Neodymium, HF 1x1.4" Titanium - AWSH® Cabinet equipped with a proprietary curved deflector designed to control the inner air flow	1605.00
XTD1015	Three-way Professional Loudspeaker System - Power handling RMS: 1400 W - Power handling Music: 2800 W Impedance (bi-amp): 8 (LF), 8 (MF+HF) Ohm - Max SPL (@ 1m): 138 dB Transducers: LF 1x15" Neodymium, MF 1x10" Neodymium, HF 1x1.4" Titanium - AWSH® Cabinet equipped with a proprietary curved deflector designed to control the inner air flow	2166.00
XTDS15	Professional Subwoofer - Power handling RMS: 1000 W - Power handling Music: 2000 W Impedance: 8 Ohm - Max SPL (@ 1m): 134 dB - Transducers: 1x15" Neodymium	1115.00
XTDS18	Professional Subwoofer - Power handling RMS: 1200 W - Power handling Music: 2400 W Impedance: 8 Ohm - Max SPL (@ 1m): 136 dB - Transducers: 1x18" Neodymium	1209.00



XTD88



XTD12



XTD15



XTD1015



XTDS15



XTDS18





XTD88/A



XTD15/A



XTDS18/A

X-TREME - ACTIVE DEFLECTOR LINE WITH DSP

MODEL		Euro (Tax excl.)
XTD88/A	Active Professional Loudspeaker System - Class D Digital Amplifier - Amplifier Power RMS: 500 W Switching DSP: 24 bit, 96 kHz (2 presets) - Max SPL (@ 1m): 129 dB Transducers: LF 2x8" Neodymium, HF 1x1" Mylar - AWSH®	1498.00
XTD12/A	Active Professional Loudspeaker System - Class D Digital Amplifier - Amplifier Power RMS: 800+800 W Switching DSP: 24 bit, 96 kHz (4 presets) - Max SPL (@ 1m): 133 dB Transducers: LF 1x12" Neodymium, HF 1x1.4" Titanium - AWSH® Cabinet equipped with proprietary curved deflector designed to control the inner air flow	2712.00
XTD15/A	Active Professional Loudspeaker System - Class D Digital Amplifier - Amplifier Power RMS: 800+800 W Switching DSP: 24 bit, 96 kHz (4 presets) - Max SPL (@ 1m): 134 dB Transducers: LF 1x15" Neodymium, HF 1x1.4" Titanium - AWSH® Cabinet equipped with proprietary curved deflector designed to control the inner air flow	2872.00
XTD1015/A	Active Three-way Professional Loudspeaker System - Class D Digital Amp. - Amp. Power RMS: 800+800 W Switching DSP: 24 bit, 96 kHz (4 presets) - Max SPL (@ 1m): 138 dB Transducers: LF 1x15" Neodymium, MF 1x10" Neodymium, HF 1x1.4" Titanium - AWSH® Cabinet equipped with proprietary curved deflector to control the inner air flow	3507.00
XTDS15/A	Active Professional Subwoofer - Class D Digital Amplifier - Amplifier Power RMS: 1600 W DSP on board: 24 bit, 96 kHz (4 presets) - Max SPL (@ 1m): 134 dB - Transducers: 1x15" Neodymium	2453.00
XTDS18/A	Active Professional Subwoofer - Class D Digital Amplifier - Amplifier Power RMS: 1600 W DSP on board: 24 bit, 96 kHz (4 presets) - Max SPL (@ 1m): 136 dB - Transducers: 1x18" Neodymium	2543.00

X-TREME - DEFLECTOR LINE ACCESSORIES

MODEL		Euro (Tax excl.)
STD-WALL	Wall bracket for vertical support of a Deflector Line loudspeaker system	79.00
XT-KITDEF	Flying kit (formed by 3 XT-FTH) to hang up 1 Deflector Line speaker on a rigging system	19.00
XT-FTH	Joint hook with ring to be wedged into the flying track for horizontal or vertical suspension	7.00
XT-ST100	Adjustable-height stand holder for subwoofer-upper module connection	49.00
XT-ST125	Adjustable-height three-legged stand	89.00
XTD88-COV	Protection enclosure for 1 Deflector Line XTD88 or XTD88/A loudspeaker system	69.00
XTD12-COV	Protection enclosure for 1 Deflector Line XTD12 or XTD12/A loudspeaker system	77.00
XTD15-COV	Protection enclosure for 1 Deflector Line XTD15 or XTD15/A loudspeaker system	86.00
XTD1015-COV	Protection enclosure for 1 Deflector Line XTD1015 or XTD1015/A loudspeaker system	149.00
XTDS15-COV	Protection enclosure for 1 Deflector Line XTDS15 or XTDS15/A subwoofer	86.00
XTDS18-COV	Protection enclosure for 1 Deflector Line XTDS18 or XTDS18/A subwoofer	95.00





X-TREME - "BIG PUNCH" HIGH POWER SUBWOOFERS

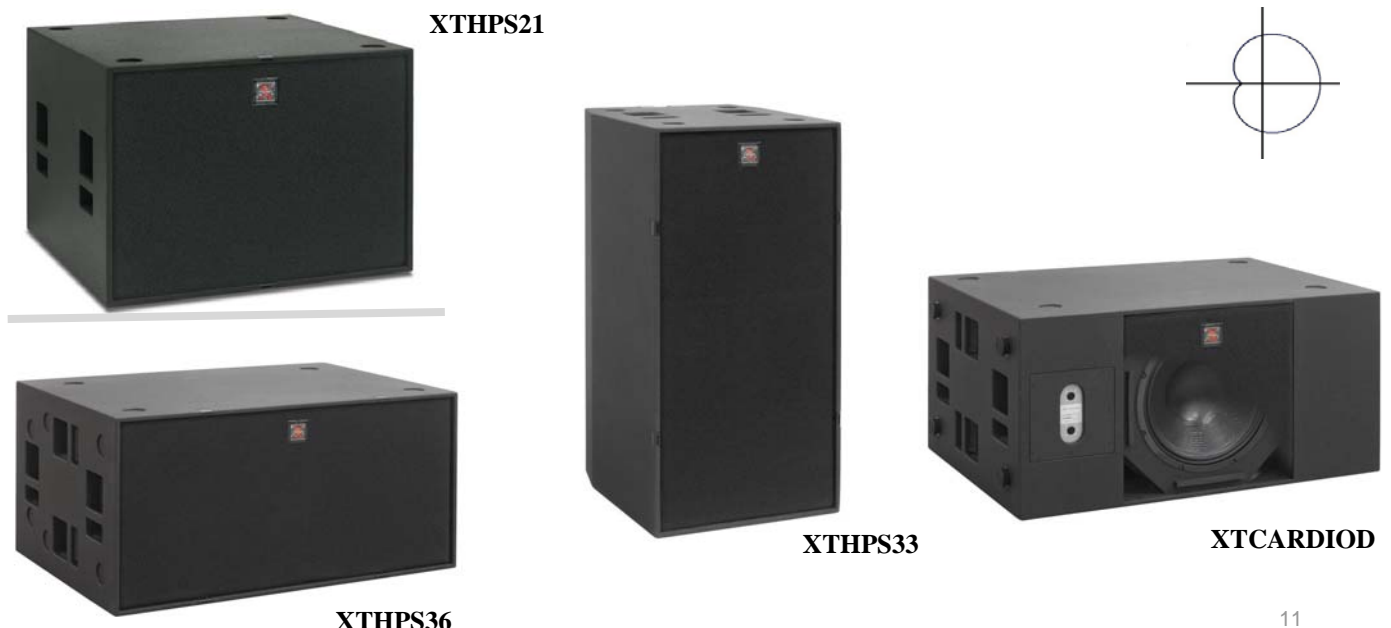
MODEL		Euro (Tax excl.)
XTHPS21	Professional "Infra-bass" Subwoofer - Power handling RMS: 1500 W - Power Music: 3000 W Impedance: 8 Ohm - Max SPL (@ 1m): 139 dB - Transducers: 1x21" Neodymium	2334.00
XTHPS33	Professional "Big Punch" Double Subwoofer - Power handling RMS: 2200 W - Power Music: 4400 W Impedance: 4 Ohm - Max SPL (@ 1m): 142 dB - Transducers: 1x15" Neodymium + 1x18" Neodymium	2853.00
XTHPS36	Professional "Big Punch" Double Subwoofer - Power handling RMS: 2400 W - Power Music: 4800 W Impedance: 4 Ohm - Special version available on request: 4+4 Ohm impedance Max SPL (@ 1m): 143 dB - Transducers: 2x18" Neodymium	2987.00
XTCARDIOID	Professional "Big Punch" Double Subwoofer - Power handling RMS: 2400 W - Power Music: 4800 W Impedance: 4 Ohm - Special version available on request: 4+4 Ohm impedance Max SPL (@ 1m): 143 dB - Transducers: 2x18" Neodymium	3708.00

X-TREME - ACTIVE "BIG PUNCH" HPS WITH DSP

MODEL		Euro (Tax excl.)
XTHPS21/A	Active Professional "Infra-bass" Subwoofer - Class D Digital Amplifier - Amp. Power RMS: 2500 W DSP on board: 24 bit, 96 kHz (2 presets) - Network for XT-NET - Max SPL (@ 1m): 139 dB Transducers: 1x21" Neodymium	4009.00
XTHPS36/A	Active Professional "Big Punch" Double Subwoofer - Class D Digital Amplifier - Amp. Power RMS: 2500 W DSP on board: 24 bit, 96 kHz (2 presets) - Network for XT-NET - Max SPL (@ 1m): 143 dB Transducers: 2x18" Neodymium	4688.00

X-TREME - "BIG PUNCH" HPS ACCESSORIES

MODEL		Euro (Tax excl.)
XTHPS21-SK	Wheelboard for XTHPS21 subwoofer	199.00
XTHPS33-SK	Wheelboard for XTHPS33 double subwoofer	204.00
XTHPS36-SK	Wheelboard for XTHPS36 double subwoofer	204.00
XTCARDIOD-SK	Wheelboard for XTCARDIOD subwoofer	204.00





X-TREME - DIGITAL TECHNOLOGY AMPLIFIERS

MODEL		Euro (Tax excl.)
XTDT3200	Stereo Switching Class D Amplifier with PFC (95-265 VAC) - Output Power RMS: 2x1600 W (@ 4 Ohm) Frequency response: 20÷20k Hz (- 1 dB) - Selectable Gain from 26 dB to 44 dB (3 dB step) THD+N < 0.1% (@1kHz) - SMPTE-IM < 0.35% - Net Weight: 11.5 Kg	2613.00
XTDT3800	Stereo Switching Class D Amplifier with PFC (95-265 VAC) - Output Power RMS: 2x1900 W (@ 4 Ohm) Frequency response: 20÷20k Hz (- 1 dB) - Selectable Gain from 26 dB to 44 dB (3 dB step) THD+N < 0.1% (@1kHz) - SMPTE-IM < 0.35% - Net Weight: 11.5 Kg	2927.00
XTDT4800F	Stereo Switching Class D Amplifier with PFC (95-265 VAC) - Output Power RMS: 4x1200 W (@ 4 Ohm) Frequency response: 20÷20k Hz (- 1 dB) - Selectable Gain from 26 dB to 44 dB (3 dB step) THD+N < 0.1% (@1kHz) - SMPTE-IM < 0.35% - Net Weight: 13.5 Kg	3763.00
XTDT6000F	Stereo Switching Class D Amplifier with PFC (95-265 VAC) - Output Power RMS: 4x1500 W (@ 4 Ohm) Frequency response: 20÷20k Hz (- 1 dB) - Selectable Gain from 26 dB to 44 dB (3 dB step) THD+N < 0.1% (@1kHz) - SMPTE-IM < 0.35% - Net Weight: 13.5 Kg	4342.00

X-TREME - CONTROLLERS

MODEL		Euro (Tax excl.)
XTDP24	Digital Speaker Management System - Ways: 2 Inputs, 4 Outputs - Frequency response: 20÷20k Hz (±0.5 dB) Sampling: 24 bit, 96 kHz with third generation Sharc processors Remote PC control for long-distances by XT-NET networking (through Ethernet cable)	1499.00
XTDP26	Digital Speaker Management System - Ways: 2 Input, 6 Output - Frequency response: 20÷20k Hz (±0.5 dB) Sampling: 24 bit, 96 kHz with third generation Sharc processors Remote PC control for long-distances by XT-NET networking (through Ethernet cable)	1739.00



XTDT family



XTDP24+XTDP26



peecker sound®

- SOUND REINFORCEMENT

PEECKER SOUND - UPTURNED T SERIES

MODEL		Euro (Tax excl.)
PSUT8TE	Stackable Hybrid-dispersion Sound Column Top Element - RMS Power: 400 W - Musical Power: 800 W Impedance: 16 Ohm - Max SPL (@ 1m): 129 dB - Max SPL (@ 16m): 107 dB Transducers: 8x4" full range Neodymium - White colour available without any extra charge	1005.00
PSUT8AE	Stackable Wide-dispersion Sound Column Additional Element - RMS Power: 400 W - Musical Power: 800 W Impedance: 16 Ohm - Max SPL (@ 1m): 128 dB - Max SPL (@ 16m): 105 dB Transducers: 8x4" full range Neodymium - White colour available without any extra charge	995.00
PSUTBASE/A	Active Professional Subwoofer, base for 1 PSUT8TE or 1 PSUT8AE + 1 PSUT8TE - Class D Digital Amplifier Amplifier Power RMS: 800+800 W - DSP on board: 24 bit, 96 kHz (4 presets) - Max SPL (@ 1m): 132 dB Transducers: 1x12" Neodymium - White colour available without any extra charge	2115.00
PSUTBASE27/A	Active Professional Subwoofer, base for 1 PSUT8TE or 1 PSUT8TE + 1 PSUT8AE - Class D Digital Amplifier Power RMS 800+800 W - DSP on board: 24bit, 96 kHz (4 presets) - Max SPL (@ 1m): 134 dB Transducers: 1x12" Neodymium + 1x15" Neodymium - White colour available without any extra charge	2506.00
PSUT1	Stackable Micro Loudspeaker System (up to 4 elements) - RMS Power: 50 W - Musical Power: 100 W Impedance: 16 Ohm - Max SPL (@ 1m): 114 dB - Transducers: 1x4" full range, Neodymium Standard colours: black or white. It can be customized in any RAL colour by paying a 15% overcharge	226.00
PSUTS	High efficiency Ultra-compact Suspendable Dual Subwoofer - RMS Power: 160 W - Musical Power: 320 W Impedance: 8 Ohm - Max SPL (@ 1m): 120 dB - Transducers: 2x6" Standard colours: black or white. It can be customized in any RAL colour by paying a 15% overcharge	473.00



ActiveStack 2_1



PSUT1



PSUTS

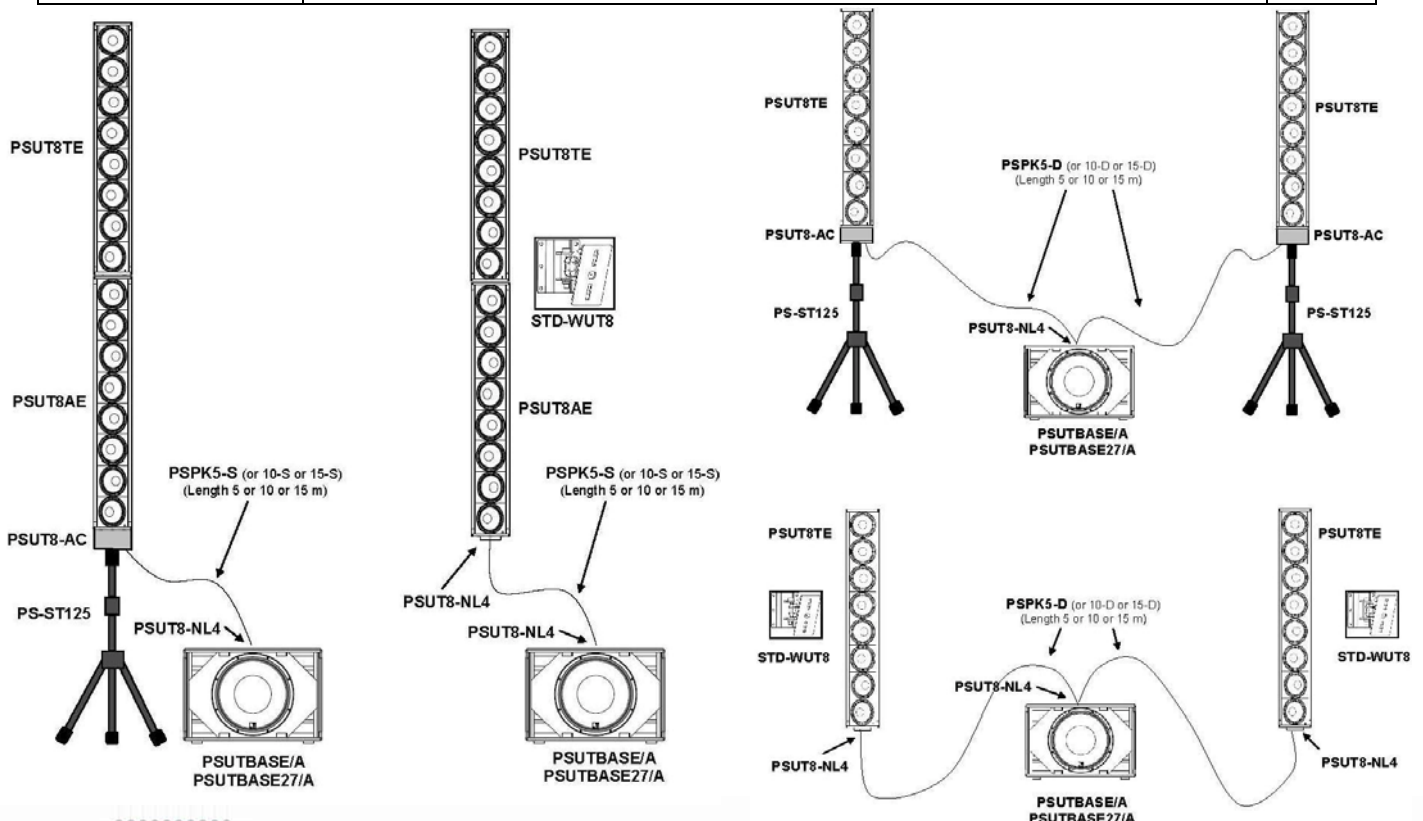
PSUTBASE27/A





UPTURNED T SERIES ACCESSORIES

MODEL		Euro (Tax excl.)
STD-WUT8	Wall bracket for vertical support of 1 or 2 (1 PSUT8AE + 1 PSUT8TE) sound columns	72.00
STD-WUT1	Wall bracket for vertical support of 1 or 2 PSUT1 speakers (180° Hor. and Vert. rotation)	23.00
STD-PSUT124	Flying bracket for 2 or 4 PSUT1 speakers (side-by-side or stacked)	76.00
STD-PSUTS	Flying bracket for one PSUTS subwoofer	25.00
PS-ST125	Adjustable-height stand holder for one PSUT8TE sound column	89.00
PSUT8-AC	<i>Input plug-SpeakOn</i> converter and adapter flange for PSUT8TE to PS-ST125 stand	133.00
PSUT8-NL4	<i>Input plug-SpeakOn</i> converter for fixed installs of one PSUT8AE or PSUT8AE column	22.00
PSUT8-ST70	Stand holder for spacing a PSUT8TE speaker from a PSUTBASE/A sub (ht. 70 cm)	217.00
PSUT1-ST110	Stand holder for spacing one (or two) PSUT1 speakers from a PSUTS sub (ht. 110 cm)	59.00
TRA-PSUT1	30W (16 Ohm)/100V line transformer for the connection of a PSUT1 speaker to 100V constant voltage lines	74.00
TRA-PSUTS	150W (8 Ohm)/100V line transformer for the connection of a PSUTS subwoofer to 100V constant voltage lines	95.00
PSPK5-S	Single wired cable PSUTBASE/A-PSUTBASE27/A - 5 mt.	39.00
PSPK10-S	Single wired cable PSUTBASE/A-PSUTBASE27/A - 10 mt.	54.00
PSPK5-D	Double wired cable PSUTBASE/A-PSUTBASE27/A - 5 mt.	66.00
PSPK10-D	Double wired cable PSUTBASE/A-PSUTBASE27/A - 10 mt.	96.00
UT8-COVER	Protection enclosure for one PSUT8TE or PSUT8AE sound column	58.00
UT8ST70-COVER	Protection enclosure for one PSUT8-ST70 stand holder	55.00
UTBASE/A-COV	Protection enclosure for one PSUTBASE/A subwoofer	95.00
UTBASE27/A-COV	Protection enclosure for one PSUTBASE27/A subwoofer	149.00
UTBASE27/A-SK	Wheelboard for PSUTBASE27/A subwoofer	220.00





PEECKER SOUND - FORTY SERIES

MODEL		Euro (Tax excl.)
4008	Professional Loudspeaker system - Power handling RMS: 220 W - Power handling Music: 440 W Impedance: 8 Ohm - Max SPL (@ 1m): 124 dB - Transducers: LF 1x8", HF 1x1"	389.00
4010MH	Professional Loudspeaker system with Modelled Horn - Power handling RMS: 300 W - Power Music: 600 W Impedance: 8 Ohm - Max SPL (@ 1m): 129 dB - Transducers: LF 1x10" Neodymium, HF 1x1" Mylar - AWSH®	682.00
4012MH	Professional Loudspeaker system with Modelled Horn - Power handling RMS: 450 W - Power Music: 900 W Impedance: 8 Ohm - Max SPL (@ 1m): 132 dB - Transducers: LF 1x12" Neodymium, HF 1x1" Mylar - AWSH®	840.00
4015MH	Professional Loudspeaker system with Modelled Horn - Power handling RMS: 550 W - Power Music: 1100 W Impedance: 8 Ohm - Max SPL (@ 1m): 133 dB - Transducers: LF 1x15" Neodymium, HF 1x1" Mylar - AWSH®	915.00
4030MH	Professional Loudspeaker system with Modelled Horn - Power handling RMS: 1080 W - Power Music: 2160 W Impedance: 8 Ohm - Max SPL (@ 1m): 137 dB - Transducers: LF 2x15" Neodymium, HF 1x1" Titanium - AWSH®	1499.00
40SW15	Professional Subwoofer - Power handling RMS: 550 W - Power handling Music: 1100 W Impedance: 8 Ohm - Max SPL (@ 1m): 133 dB - Transducers: 1x15"	846.00
40SW18	Professional Subwoofer - Power handling RMS: 600 W - Power handling Music: 1200 W Impedance: 8 Ohm - Max SPL (@ 1m): 134 dB - Transducers: 1x18"	954.00

PEECKER SOUND - ACTIVE FORTY SERIES WITH DSP

MODEL		Euro (Tax excl.)
4012MH/A	Active Professional Speaker with Modelled Horn - Class D Digital Amplifier - Amplifier Power RMS: 500 W DSP on board: 24 bit, 96 kHz (2 presets) - Max SPL (@ 1m): 130 dB Transducers: LF 1x12" Neodymium, HF 1x1" Mylar - AWSH®	1398.00
4015MH/A	Active Professional Speaker with Modelled Horn - Class D Digital Amplifier - Amplifier Power RMS: 500 W DSP on board: 24 bit, 96 kHz (2 presets) - Max SPL (@ 1m): 131 dB Transducers: LF 1x15" Neodymium, HF 1x1" Mylar - AWSH®	1463.00
4030MH/A	Active Professional Speaker with Modelled Horn - Class D Digital Amplifier - Amplifier Power RMS: 500 W DSP on board: 24 bit, 96 kHz (2 presets) - Max SPL (@ 1m): 132 dB Transducers: LF 2x15" Neodymium, HF 1x1" Titanium - AWSH®	2048.00
40SW15/A	Active Professional Subwoofer - Class D Digital Amplifier - Amplifier Power RMS: 500 W DSP on board: 24 bit, 96 kHz (2 presets) - Max SPL (@ 1m): 130 dB - Transducers: 1x15"	1386.00
40SW18/A	Active Professional Subwoofer - Class D Digital Amplifier - Amplifier Power RMS: 500 W DSP on board: 24 bit, 96 kHz (2 presets) - Max SPL (@ 1m): 130 dB - Transducers: 1x18"	1494.00



FORTY family



FORTY SERIES ACCESSORIES

MODEL		Euro (Tax excl.)
STD-4008	Horizontal flying bracket for Forty 4008 loudspeaker system + 10MA adapter flange	68.00
STD-4010	Horizontal flying bracket for Forty 4010MH loudspeaker system + 10MA adapter flange	76.00
STD-4012	Horizontal flying bracket for Forty 4012MH loudspeaker system + 10MA adapter flange	80.00
STD-4015	Horizontal flying bracket for Forty 4015MH loudspeaker system + 10MA adapter flange	84.00
PS-GN	Stainless steel hook for attachment to a rigging system	16.00
STD-WALL	Wall bracket for vertical support of a Forty series upper module (except for mod. 4030MH)	79.00
PS-OC6	Kit of three 10MA eyelets for vertical hanging of 1 Forty series upper module (except for mod. 4008)	32.00
PS-ST100	Adjustable-height stand holder for subwoofer-upper module connection (except for mod. 4030MH)	49.00
PS-ST125	Adjustable-height three-legged stand for 1 Forty series upper module (except for mod. 4030MH)	89.00
4012-COV	Protection enclosure for one 4012MH or 4012MH/A loudspeaker	65.00
4015-COV	Protection enclosure for one 4015MH or 4015MH/A loudspeaker	86.00
4030-COV	Protection enclosure for one 4030MH or 4030MH/A loudspeaker	149.00
40SW15-COV	Protection enclosure for one 40SW15 or 40SW15/A subwoofer	89.00
40SW18-COV	Protection enclosure for one 40SW18 or 40SW18/A subwoofer	91.00





• CONTROLLED RADIATION

PEECKER SOUND - DOUBLE ARRAY SERIES®

MODEL		Euro (Tax excl.)
AS4L <i>New!</i>	Controlled radiation LF stereo module with Double Array - RMS Power: 2x400 W - Power Music: 2x800 W Impedance (Left/Right): 8/8 Ohm - Max SPL (@ 1m): 135 dB - Transducers: LF 4x8" The covered area and the attenuation depend on the number of modules and their positioning	1470.00
AS16MH <i>New!</i>	Controlled radiation MF-HF stereo module with Double Array - RMS Power: 2x230 W - Power Music: 2x640 W Impedance (Left/Right): 8/8 Ohm - Max SPL (@ 1m): 134 dB - Transducers: 16x5" full range, Neodymium The covered area and the attenuation depend on the number of modules and their positioning	2855.00
AS6	Controlled radiation system with Double Array - Power RMS: 450 W - Power Music: 900 W Impedance: 6 Ohm Max SPL (@ 1m): 127 dB	1198.00
AS60	Controlled radiation stereo system with Double Array - RMS Power: 2x1300 W - Power Music: 2x2600 W Impedance (Left/Right): 8/8 Ohm - Max SPL (@ 1m): 134 dB - Transducers: LF 36x5", HF 2x1" Titanium Covered area (@ height = 3.5 m): 35 m ² - High-attenuation distance (-20 dB): 7 m	4836.00
AS120	Controlled radiation stereo system with Double Array - RMS Power: 2x2285 W - Power Music: 2x4570 W Impedance (Left/Right): 8/8 Ohm - Max SPL (@ 1m): 138 dB - Transducers: LF 64x5", HF 2x1" Titanium Covered area (@ height = 3.5 m): 55 m ² - High-attenuation distance (-20 dB): 9 m	6735.00
AS180	Controlled radiation stereo system with Double Array - RMS Power: 2x1600 W - Power Music: 2x3200 W Impedance (L/R): 4/4 Ohm - Max SPL (@ 1m): 140 dB - Transducers: LF 12x10" Neodymium, HF 4x1" Titanium Covered area (@ height = 3.5 m): 110 m ² - High-attenuation distance (-20 dB): 13 m	7260.00
PS-KITAS1	Flying bar to suspend Controlled Radiation Module 1 AS16MH or 1 AS4L	97.00
PS-KITAS2	Flying bar to suspend Controlled Radiation Module 1 AS16MH + 1 AS4L	144.00
PS-KITAS4	Flying bar to suspend Controlled Radiation Module 2 AS16MH + 2 AS4L	576.00



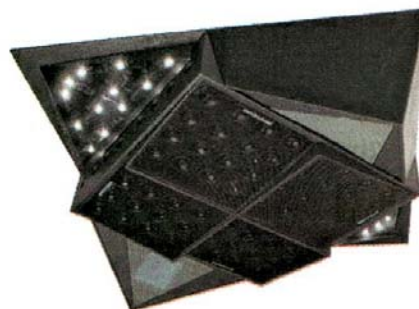
AS16MH



AS4L



AS60



AS120



AS180





• **ACOUSTIC RESEARCH**



JA12



JAGR01

PEECKER SOUND - OMNI-DIRECTIONAL NOISE SOURCE

MODEL		Euro (Tax excl.)
JA12	Dodecahedral Omni-directional Noise Source - RMS Power: 2x180 W - Power handling Peak: 2x720 W Impedance: 6+6 Ohm - Maximum Acoustic Power RMS: 122 dB (@ 10 ⁻¹² W) - Transducers: 12x5" full range Uniform dispersion through the solid angle around the source - The noise source is designed in compliance with the minimum directivity regulations of UNI EN ISO 3382:2001 and UNI EN ISO 140-3:2006	1508.00
JASW12/A	Active Professional Subwoofer - Class D Digital Amplifier - Power RMS: 500 W - Digital DSP: 24 bit, 96 kHz	1362.00
JA4012	Professional Speaker for External Wall Insulation Measurements - Power RMS: 450 W - Power Music: 900 W Impedance (bi-amp): 4 (LF), 8 (HF) Ohm - Max SPL (@ 1m): 132 dB Transducers: LF 1x12" Neodymium, HF 1x1" Mylar - AWSH®	840.00
JADSP1250	Switching class D Power Amplifier with White/Pink Noise Generator and wireless Remote Control Output Power RMS (@2 Ohm): 1250+1250 W - DSP on board: 24 bit, 96 kHz (2 presets) Network for PS-NET - It has integrated inside a wireless distance control kit	2244.00
JAGR01	Portable White/Pink Noise Generator - Frequency response: 40÷22k Hz (-3 dB) Selectable Output Level, Max Output Level: 0 dBu - Current Power Supply: 12 VDC	258.00

OMNI-DIRECTIONAL NOISE SOURCE ACCESSORIES

MODEL		Euro (Tax excl.)
STD-JA4012	Fixing Bracket with graduated scale for JA4012 External Wall Speaker	80.00
TH-JA12	T-shaped handle for JA12 dodecahedral omni-directional noise source	13.00
PS-ST100	Adjustable-height stand holder for flight case-JA12 connection	49.00
PS-ST125	Adjustable-height three-legged stand for JA12 loudspeaker system	89.00
FC-JA12	Professional flight-case made of phenolyc plywood with foam inside It is dedicated to JA12 omni-directional noise source	579.00
FC-JADSP1250	Professional flight-case made of birch plywood It is dedicated to JADSP1250 amplifier	889.00

Installation services and shipping costs are NOT included in the price of the products above - they will be added separately.

This price list cancels any former one and it is subject to modifications without prior notice.

X-Treme, Peecker Sound and the other patented names are registered trademarks property of the Sound Corporation group.

All rights reserved.

